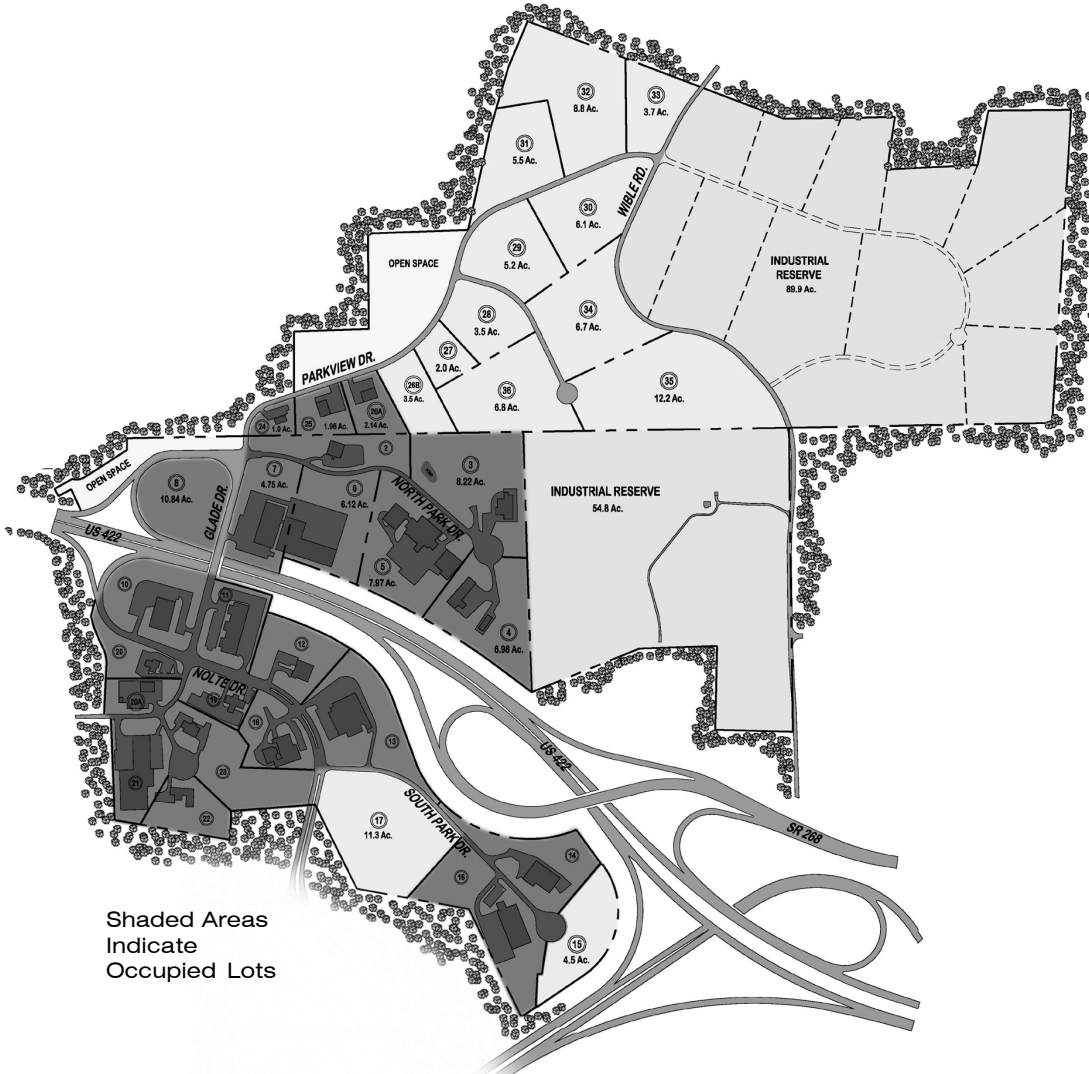
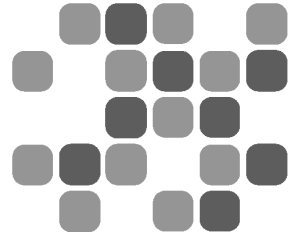


West Hills Industrial Park



Shaded Areas Indicate Occupied Lots

LOT # / AVAILABLE ACREAGE

15	4.5
17	11.3
26B	3.5 - KOZ
27	2.0 - KOZ
28	3.5 - KOZ
29	5.2 - KOZ
30	6.1 - KOZ
31	5.5 - KOZ
32	8.8 - KOZ
33	3.7 - KOZ
34	6.7
35	12.2
36	6.8

LOT # / PRESENT TENANTS

2	L.N. Sotos Orthopaedic Associates
3	Tiche/First
4	Global Ceramics
5	SinterMet
6, 7	Wetsel Seed Company
8, 10	Snyder Associated Companies
11	West Hills Commons
12	Vista Metals
13, 14, 18	Sylvan America
16	Hess Trucking
19	Pennsylvania State Police
20	Armstrong Associates
20A	Schwann's Enterprises
21	Drug Plastics
22	Armstrong Precision Manufacturing
23	Curtis Industries
24	R. E. Erdley Professional Building
25	Jerich Co.
26A	CSN Holdings, Inc.

TRANSPORTATION

Highways
Interstate:
PA Turnpike (25 miles)
I-80 (42 miles)
1-79 (37 miles)

U.S. Routes
Route 422

State Routes
Route 28
Route 66 (3 miles)
Route 268 (1 mile)

Air
Pittsburgh International Airport (50 miles)
Jimmy Stewart Airport - Indiana (30 miles)
Butler Airport - Butler (24 miles)

UTILITIES

Electricity
Allegheny Energy Systems

Natural Gas
Dominion

Telephone
Windstream

Water
Kittanning Suburban Joint Water Authority

Sewerage
West Hills Area Water Pollution Control Authority

For additional information, contact:



Armstrong County

**Armstrong County, PA
Department of Planning
and Development**

402 Market Street
Kittanning, PA 16201
(724) 548-1500
(724) 545-7050 FAX
e-mail: jrholder@co.armstrong.pa.us
Website: www.armstrongidc.org