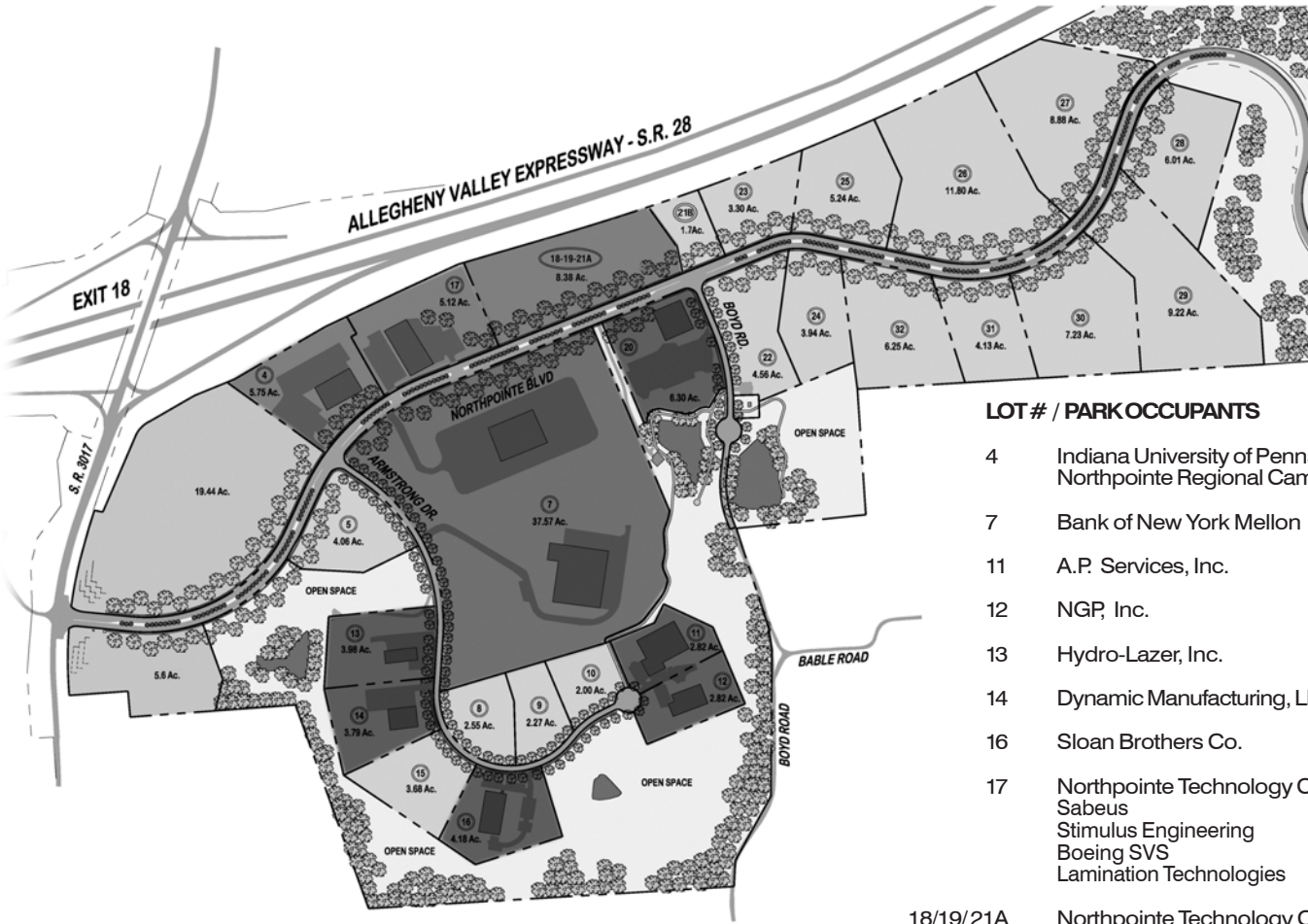
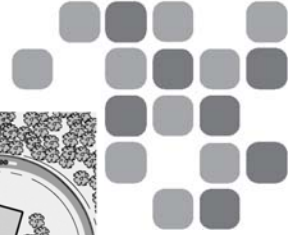


# Northpointe



### LOT # / PARK OCCUPANTS

4	Indiana University of Pennsylvania - Northpointe Regional Campus
7	Bank of New York Mellon
11	A.P. Services, Inc.
12	NGP, Inc.
13	Hydro-Lazer, Inc.
14	Dynamic Manufacturing, LLC
16	Sloan Brothers Co.
17	Northpointe Technology Center I: Sabeus Stimulus Engineering Boeing SVS Lamination Technologies
18/19/21A	Northpointe Technology Center II (Coming Soon)
20	Electro-Optics Center

### LOT # / AVAILABLE ACREAGE

5	4.0
8	2.5 - KOZ
9	2.2 - KOZ
10	2.0 - KOZ
15	3.6 - KOZ
21B	1.7
22	4.4
23	3.2
24	3.9
25	5.2
26	11.8
27	8.8
28	6
29	9.2
30	7.1
31	4.1
32	6.5

### TRANSPORTATION

**Highways:**  
Allegheny Valley Expressway (Adjacent)  
PA Turnpike (19 miles)  
Interstate 79 (38 miles)  
Route 422 (5 miles)

**Air:**  
Pittsburgh International Airport (44 miles)

### UTILITIES

**Electricity:** Allegheny Energy Systems  
**Natural Gas:** Equitable Gas Company  
**Telephone:** Consolidated Communications  
**Water:** South Buffalo Township Municipal Authority  
**Sewerage:** Armstrong County Industrial Development Authority  
**High Bandwidth Fiber:** Allegheny Connect, Consolidated Communications & DQE Communications

For additional information, contact:



**Armstrong County, PA**  
**Department of Economic Development**

Armsdale Administration Building  
124 Armsdale Road, Suite 205  
Kittanning, PA 16201  
(724) 548-1500  
(724) 545-6055 FAX  
e-mail: [jmolder@co.armstrong.pa.us](mailto:jmolder@co.armstrong.pa.us)  
Website: [www.armstrongidc.org](http://www.armstrongidc.org)

